

Facade



Rachel Griffith
DESIGNS

Facade

Finished quilt: 70 ½" x 52 ½"

Finished block: 4" x 6"

Quantities are for 44/45" wide, 100% cotton fabrics

Measurements include ¼" seam allowances.

Sew with right sides together unless otherwise stated.

WOF means width of fabric.

Materials:

1 Layer cake

2 yards solid white/cream

5/8 yard binding

3 ½ yards backing

Cut fabrics:

From layer cake:

Select 33 of your favorite layer cake squares.

Tip: The more colorful the fabrics read the more contrast your quilt will have.

Cut each of those 10" squares in half, then in half again to yield four 5" x 5" squares.

Trim two 5" squares into 4 7/8" x 4 7/8" squares. Set aside.

Subcut the remaining two 5" squares into 2 ½" x 4 ½" rectangles.

Repeat for all 33 layer cake squares.

Each 10" square will yield two 4 7/8" squares and four 2 ½" x 4 ½" rectangles.

From white/cream solid fabrics:

9 – 4 7/8" x WOF strips, subcut into the following pieces:

66 – 4 7/8" x 4 7/8" squares

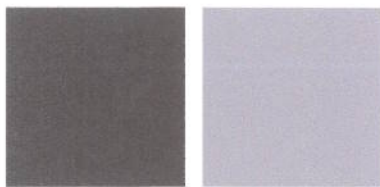
6 – 2 ½" x WOF strips (borders)

From binding fabric:

6 – 2 ¼" x WOF strips

Half square triangles (hst):

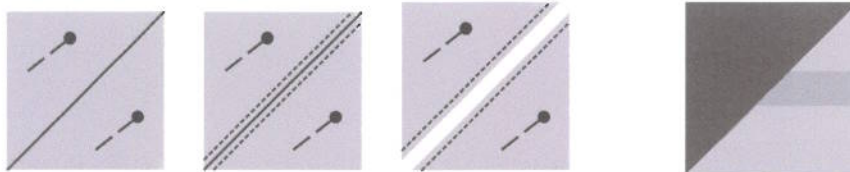
Take two 4 7/8" squares of fabric: one print, one solid.



Draw a line, diagonally, on the wrong side of the solid fabric.

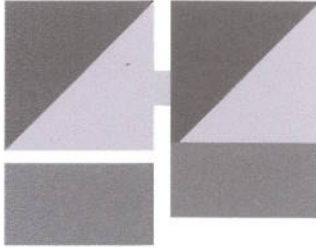
With right sides together, stitch ¼" seam on both sides of drawn line. Cut apart on drawn line.

Press to your print fabric. Trim dog ears. This will yield 2 hst blocks.



Repeat for all 66 print/solid squares for a total of 132 half square triangles.

Assemble Blocks:



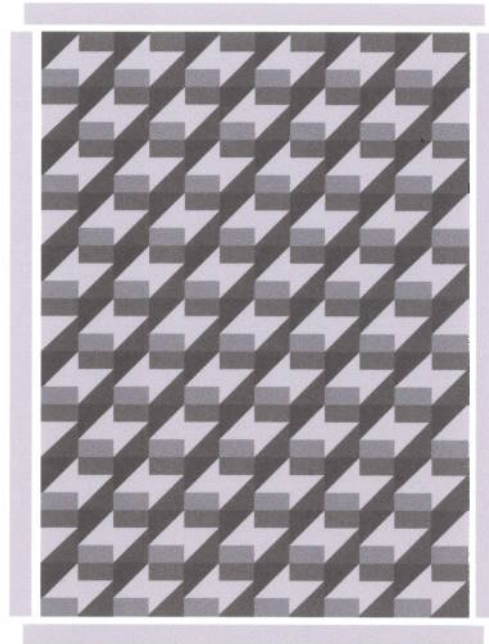
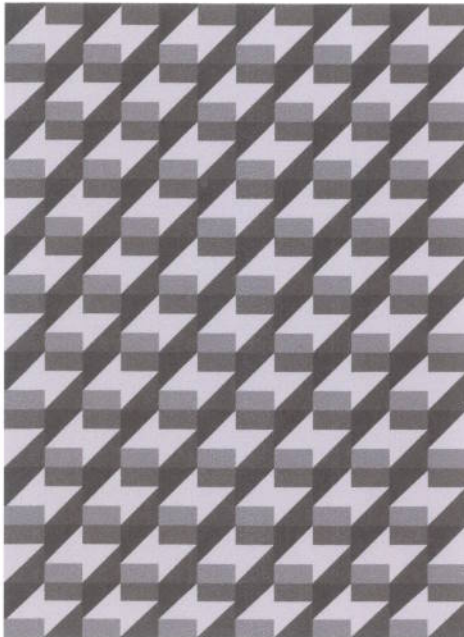
Take one hst with the print on the top half and add a 2 ½" x 4 ½" rectangle along the bottom solid half. Press towards the rectangle. Repeat for all 132 blocks.

Tip: Chain or Assembly Line piecing makes for a great time saver when constructing these blocks.

Assemble Quilt Top:

Using the diagram as reference, make a 12 block x 11 block layout, rotating the blocks so that the rectangles follow an up and down pattern.

Tip: Pay careful attention to the orientation of the blocks. This is key to the overall design.



Finish Quilt:

Layer quilt top, batting and backing; baste.

Quilt as desired.

Bind with orange binding strips.

This pattern was created and edited by Rachel Griffith. If you have any questions or comments regarding this pattern, please direct them to Rachel at rachel@psiquilt.com.

Facade

"there's nothing deceptive about this quick & easy quilt."

Quilt Size: 52½" x 70½"
Designed By: Rachel Griffith
Quilted By: Darla Padilla



Materials:
1 Layer Cake
2 yards solid white/cream
5/8 yard binding
3 1/2 yards backing

Cover Fabric: Good Fortune by Kate Spain for Moda



7 38435 44904 9
RGD #110

© Rachel Griffith Designs 2012

www.psqquilt.com
rachel@psquilt.com
All rights reserved.

No part of this pattern may be reproduced in any form without the written consent of Rachel Griffith.