



--- GIRLY TWIRLY SKIRT ---

Emily Levey

This gorgeous gathered skirt features an elasticated waistband for comfort, and a contrasting hem band for style. By cutting the elastic to size, the skirt can be made to fit girls of three to six years. A larger skirt can be sewn for an older child by increasing the size of the contrasting hem band, however it will not be as full.

MATERIALS

- ◆ 2 fat quarters of fabric: main and accent
- ◆ $\frac{3}{4}$ in (2cm) wide elastic, cut to child's measurements

◆ PATTERN NOTES

Seam allowance is $\frac{5}{8}$ in (1.5cm)

1 Cut selvages of the same size from the fat quarters. Cut your main print fat quarter in half along the length, as shown (see Fig 1).

2 With right sides facing, join the two halves along the short edge to give you a 10 x 44in (25 x 112cm) rectangle. Finish the seam allowance and iron.

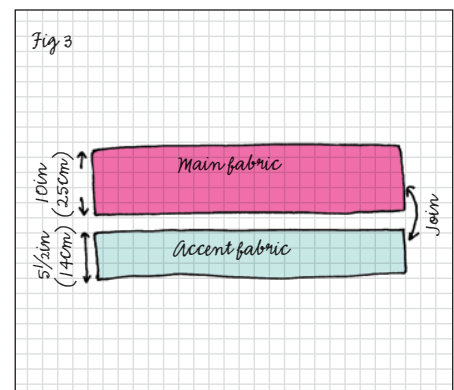
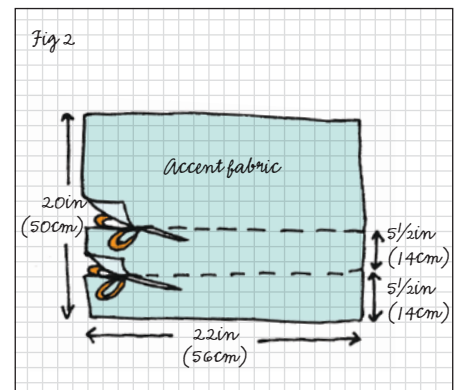
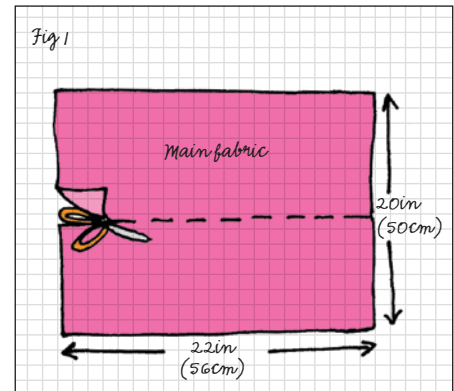
3 Cut two rectangles from the accent fabric measuring $5\frac{1}{2}$ in (14cm) x width of fabric (see Fig 2).

4 With right sides facing, join the two halves along the short edge to form a $5\frac{1}{2}$ x 44in (14 x 112cm) rectangle. Finish the seam allowance and iron.

5 With right sides facing, join the two skirt panels along the long edge (see Fig 3), finish the seam and iron downwards. If you are using a directional print, ensure the accent fabric is sewn along the bottom edge.

6 Join the sides of the skirt to form a tube, finish the seam and iron. Ensure the seam on the hem band matches up on each side.

7 Turn over the top edge of the skirt by $\frac{1}{4}$ in (6mm), bringing the raw edge over to the wrong side of the fabric, and iron. Now turn over by 1in (2.5cm), enclosing the raw edge, and iron again. Stitch around the top of the skirt, $\frac{7}{8}$ in (2.2cm) from the top edge, to catch this fold. Leave a 2in (5cm) gap for inserting the elastic.



8 To make the hem turn over the bottom edge by $\frac{1}{4}$ in (6mm), bringing the raw edge over to the wrong side of the fabric, and iron. Turn over again by 1 in (2.5cm), enclosing the raw edge, and iron. Stitch around the bottom of the skirt, $\frac{7}{8}$ in (2.2cm) from the bottom edge.

9 Cut a length of elastic to the child's measurements, using the following as a guide:

3 years = 18 $\frac{3}{4}$ in (48cm)

4 years = 20in (50cm)

5 years = 21 in (53cm)

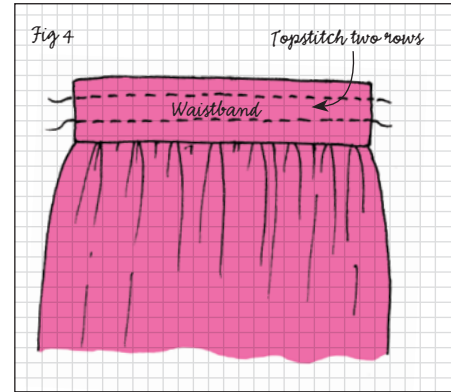
6 years = 22in (56cm)

10 Using a large safety pin, feed the elastic around the skirt in the top opening, taking care not to twist it. Overlap the ends by 1 in (2.5cm) and secure together with a zigzag stitch. Stitch the opening closed.

11 Topstitch around the top of the skirt twice, sewing through the elastic to prevent it from twisting whilst being worn (see Fig 4). Stretch out the elastic as you sew to ensure that the fabric lies flat.

Top Tip

IF THE ELASTIC IS SLACK, A GENTLE STEAM WITH AN IRON ON A HIGH STEAM SETTING WILL HELP IT TO SHRINK BACK. HOLD THE IRON JUST ABOVE THE FABRIC WITHOUT TOUCHING IT.





---NATURE NESTING BOWLS---

Emily Levey

These sweet nesting bowls are pretty stacked and displayed together, or they can be used throughout the home for organizing all your bits and bobs. I chose prints featuring ladybirds, flowers and birds and formed the corners into leaf shapes for a nature theme.

MATERIALS

- ◆ 6 fat quarters of fabric
- ◆ 50cm (20in) square compressed fleece
- ◆ 50cm (20in) square iron-on interfacing

◆ PATTERN NOTES

Seam allowance is $\frac{1}{2}$ in (1.2cm), unless stated otherwise

1 For the large bowl cut two 19in (48.5cm) squares from fabric, one 19in (48.5cm) square from compressed fleece and one 18in (46cm) square from iron-on interfacing.

2 For the medium bowl cut two 15in (38cm) squares from fabric, one 15in (38cm) square from compressed fleece and one 14in (35.5cm) square from iron-on interfacing.

3 For the small bowl cut two 10in (25cm) squares from fabric, one 10in (25cm) square from compressed fleece and one 9in (23cm) square from iron-on interfacing.

4 For the tiny bowl cut two 6½in (16.5cm) squares from fabric, one 6½in (16.5cm) square from compressed fleece and one 5½in (14cm) square from iron-on interfacing.

5 Use the following steps for each nesting bowl. On the wrong side of one fabric square, fuse the iron-on interfacing for

the inside of the bowl, following the manufacturer's instructions. You should have a 1½in (1.2cm) gap around each edge.

6 Place the other fabric square wrong side down onto the compressed fleece. Now place the fabric square with the interfacing onto this, so that the right sides of the fabric are facing each other. Pin around the outer edges.

7 Sew around all four sides, leaving a 3–4in (7.5–10cm) turning gap on one side. You can use the edge of the interfacing as a guide for your seam allowance. Clip the corners to reduce bulk.

8 Turn the right sides out through the gap, using a wooden stick or similar to push out the corners into a neat point. Iron well and tuck the raw edges of the unsewn gap inside, then iron or pin the gap closed.



Top Tip

INCREASE YOUR STITCH LENGTH
FOR TOPSTITCHING TO ABOUT
 $\frac{1}{8}$ IN (3MM).



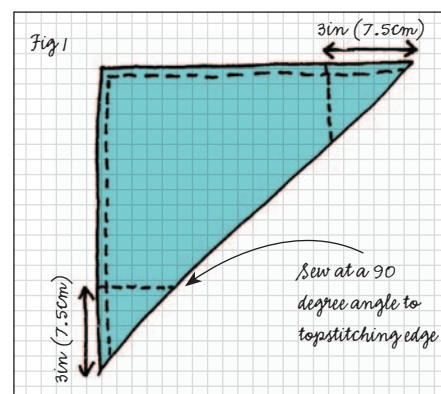
9 Topstitch around each side, $\frac{1}{8}$ in (3mm) from the edge, to close the gap.

10 Repeat step 1-4 with the remaining squares for the other bowl sizes.

11 To form the sides of the bowls, start with the large bowl and fold the square in half diagonally, with the interfaced fabric on the inside. Measure 3in (7.5cm) from the point along the topstitched edge and mark. Sew a line at a 90-degree angle to the topstitched edge, reverse stitching at the start and end to secure. Repeat for the opposite corner (see Fig 1).

12 Open out the triangle and refold diagonally in the other direction. Repeat Step 11 for the two remaining corners.

13 Repeat Steps 11-12, substituting the measurements from the corner as follows: 2½in (6.5cm) for the medium bowl, 2in (5cm) for the small bowl and 1in (2.5cm) for the tiny bowl.





STYLISH SATCHEL

Emily Levey

The trend-setting tween will adore this sweet little satchel bag featuring a cross-body strap, a contrasting front pocket and a flap closure to keep valuables safe! Make it in her favourite fabrics to flatter her current style.

MATERIALS

- ◆ 3 fat quarters of fabric: main, lining and pocket
- ◆ 20in (50cm) cotton quilter's wadding (batting)
- ◆ Two 2in (5cm) squares of firm iron-on interfacing
- ◆ Magnetic popper (snap) fastener

◆ PATTERN NOTES

Seam allowance is $\frac{5}{8}$ in (1.5cm)

Top Tip

MAKE A NOTE OF WHAT EACH PIECE IS FOR (FLAP, POCKET, HANDLE, ETC.) BY PINNING ON A LABEL OR WRITING ON MASKING TAPE AND STICKING IT IN PLACE.

1 From the main fabric, lining fabric and wadding, cut two 10in (25cm) squares for the main body of the bag and an 8 × 4½in (20 × 11.5cm) rectangle for the flap.

2 Trace around a plate or another rounded object at both bottom corners of the flap fabric and trim the corners away. Repeat on the flap lining and wadding.

3 Cut a 7in (18cm) square from the pocket fabric, lining fabric and wadding. From the pocket fabric cut a 6 × 22in (15 × 55cm) and a 6 × 8in (15 × 20cm) rectangle for the handle. Now cut a 1¾ × 28½in (3.5 × 72cm) rectangle from wadding. If your wadding is not large enough to cut this in one piece, join scraps together using zigzag stitch.

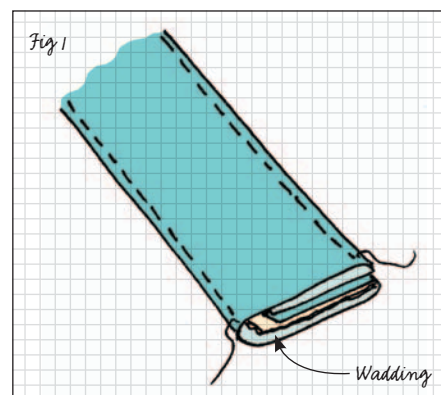
4 Take the lining fabric flap piece and make a central mark 1¾in (3.5cm) from the bottom edge on the wrong side. Position the small square of interfacing over this mark and fuse with an iron. Following the manufacturer's instructions, insert one side of the magnetic fastener over this mark.

5 Lay the two flap fabric pieces right sides together and place the wadding on top of the main fabric. You can use basting spray to tack (baste) the wadding to the fabric piece. Pin around the bottom curved edge and sew along. Trim the seam allowance to reduce bulk, turn the right way out and iron well. Topstitch ¼in (6mm) from the edge along the curved edge. Tack the top opening closed and set aside.

6 Sew the strap fabric pieces together along the short edge and iron the seam open to make a 6 × 28½in (15 × 72cm) strap. Iron in half with wrong sides together along the

length and open out. Bring the two outer edges into the centre and iron again. Tuck the long wadding strip under one of these folds and fold the strap in half again. You should have a long strap about 1½in (4cm) wide with all the raw edges enclosed. Pin along the length, topstitch ½in (2.5mm) from the edge down both long sides (see Fig 1) and set aside.

7 Repeat Step 4 with the main fabric pocket piece and the remaining side of the magnetic fastener, this time making a central mark 1¾in (3.5cm) down from the top edge on the wrong side of the flap.



Top Tip

REVERSE STITCH AT THE BEGINNING AND END OF YOUR SEAMS TO SECURE YOUR THREADS.

8 Lay the two pocket fabric pieces right sides together and place the wadding on top of the lining fabric (it is useful to use basting spray here). Pin around all four sides and sew around, leaving a 3¼in (8cm) opening in the bottom edge. Sew slowly past the magnetic fastener, making sure you keep straight. A walking foot can be used to stitch through all the layers.

9 Trim the corners of the pocket piece and turn the right way out. Iron well, taking care to tuck in the unsewn edges of the opening and line up neatly. Pin the pocket centrally on the front of one of the 10in (25cm) main bag fabric square pieces, 1½in (3.5cm) down from the top edge. Topstitch ½in (2.5mm) from the edge along the two sides and bottom edge, leaving the top edge open (see Fig 2).



10 Take the two 10in (25cm) square lining pieces and pin together with right sides facing along the two sides and bottom edge, leaving the top edge open. Stitch around these three sides, leaving a 4in (10cm) turning gap in the centre of the bottom edge. Trim the corners, turn through to the right sides and set aside.

11 Tack the two 10cm (25cm) square wadding pieces onto the wrong sides of the two 10cm (25cm) square main fabric pieces using basting spray. Place the completed flap section centrally onto the top edge of the bag back piece (without the pocket), with the lining facing up and the main prints facing each other. Tack in place, stitching ⅜in (1cm) from the edge.

12 Place the two outer bag pieces with right sides facing and pin along the sides and bottom edge, leaving the top edge open. Stitch around the three edges and trim the corners.

13 Tack (baste) the completed handle in place on the outer bag section. Line up the handle centrally over the side seams of the bag, with the short raw edge in line with the top edge of the bag and the bulk down inside the bag (see Fig 3).

14 Put the lining inside the outer bag section, with right sides together. Pin then stitch around the top edge. Turn the bag right sides out through the turning gap in the lining. Iron well and slipstitch the opening closed.

