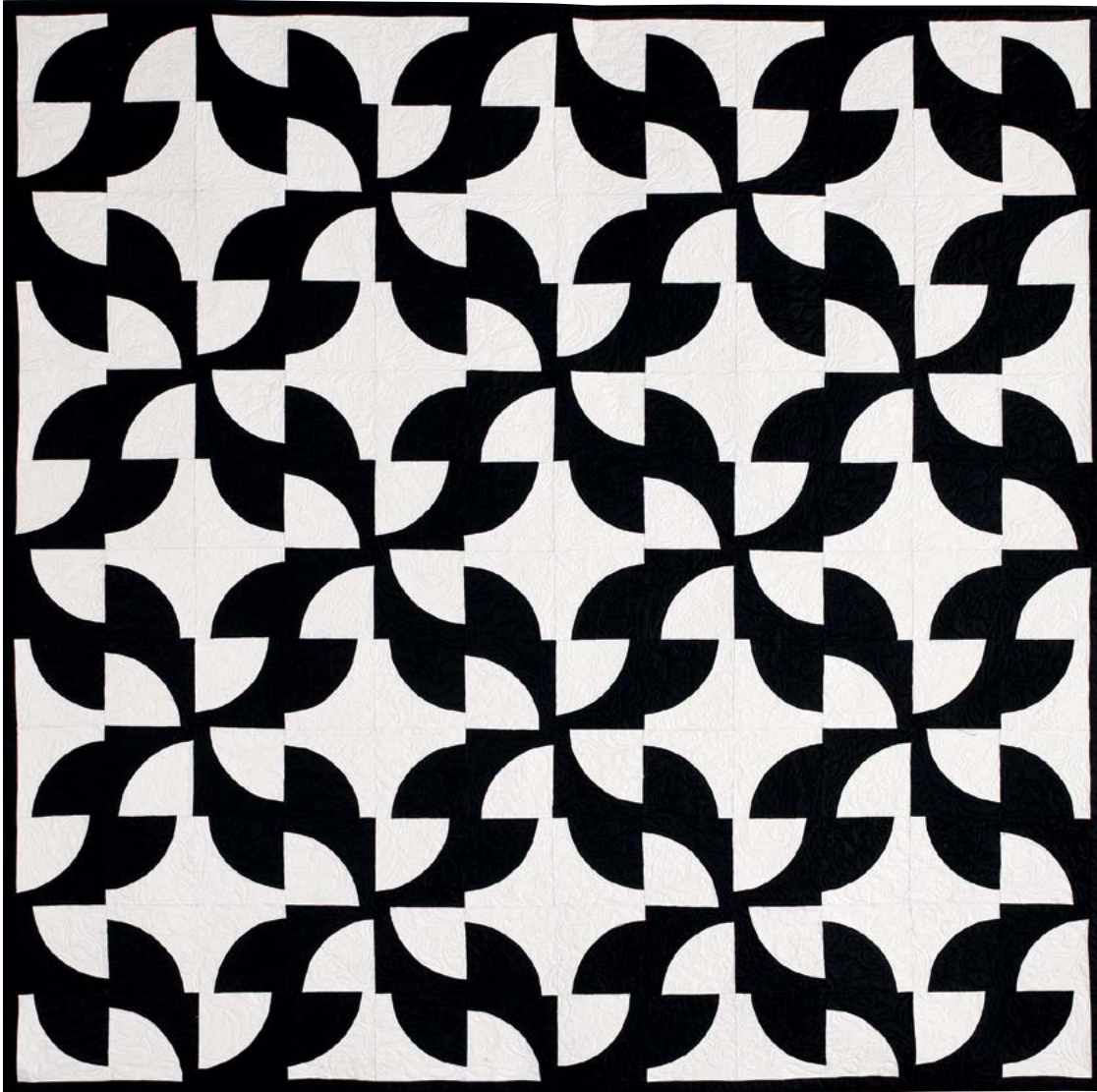


Très Chic

If this quilt were a person, we think she'd be living in Paris.

QUILT DESIGN BY Quilty & Co.
QUILT MADE BY Nancy McNally





MATERIALS

5 yards black solid for blocks, border,
and binding

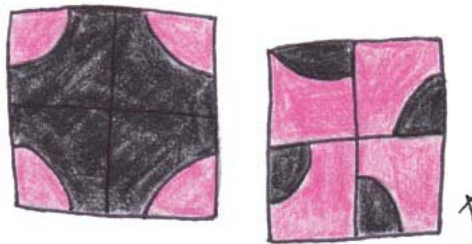
4⅞ yards cream solid for blocks

Fons & Porter's Curved Seam
Template Set or template material

4½ yards backing fabric

Full-size quilt batting

MAKE IT YOUR OWN



Pink and black...wow!



FABRIC NOTE:
Moda Solids used here!

CUTTING

Measurements include $\frac{1}{4}$ " seam allowances. Border strips are exact length needed. You may want to cut them longer to allow for piecing variations. If not using Fons & Porter's Curved Seams Template Set, make templates from Take-Away and Fill-In patterns on page 42.

From black solid, cut:

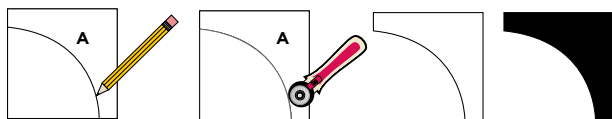
- 12 (6½"-wide) strips. From strips, cut 72 (6½") A squares.
- 11 (5½"-wide) strips. From strips, cut 72 (5½") B squares.
- 8 (2¼"-wide) strips for binding.
- 8 (1¼"-wide) strips. Piece strips to make 2 (1¼" x 74") top and bottom borders and 2 (1¼" x 72½") side borders.

From cream solid, cut:

- 12 (6½"-wide) strips. From strips, cut 72 (6½") A squares.
- 11 (5½"-wide) strips. From strips, cut 72 (5½") B squares.

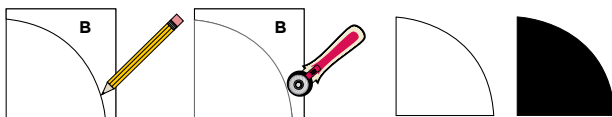
BLOCK ASSEMBLY

1. Position Take-Away template on 1 corner of cream A square, aligning edges as shown in Cutting Diagrams. Trace curved edge; cut on line to make 1 background piece. Make 72 cream and 72 black background pieces.



Cutting Diagrams

2. Position Fill-In template on 1 corner of cream B square, aligning edges as shown in Cutting Diagrams. Trace curved edge; cut on line to make 1 quarter-circle. Cut 72 cream and 72 black quarter circles using B squares.



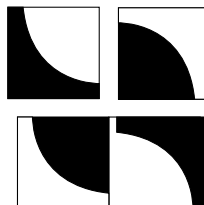
Cutting Diagrams

3. Join 1 black quarter-circle to 1 cream background piece to make 1 cream Block Unit (Block Unit Diagrams). Make 72 cream Block Units and 72 black Block Units.

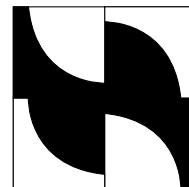
4. Lay out 2 Cream Block Units and 2 Black Block Units as shown in Block Assembly Diagram. Join into rows; join rows to complete 1 block (Block Diagram). Make 36 blocks.



Block Unit Diagrams



Block Assembly Diagram



Block Diagram

QUILT ASSEMBLY

1. Lay out blocks as shown in Quilt Top Assembly Diagram. Join your blocks into rows; join your rows to complete quilt center.
2. Add black side borders to quilt center. Then add top and bottom borders to the quilt.

FINISHING

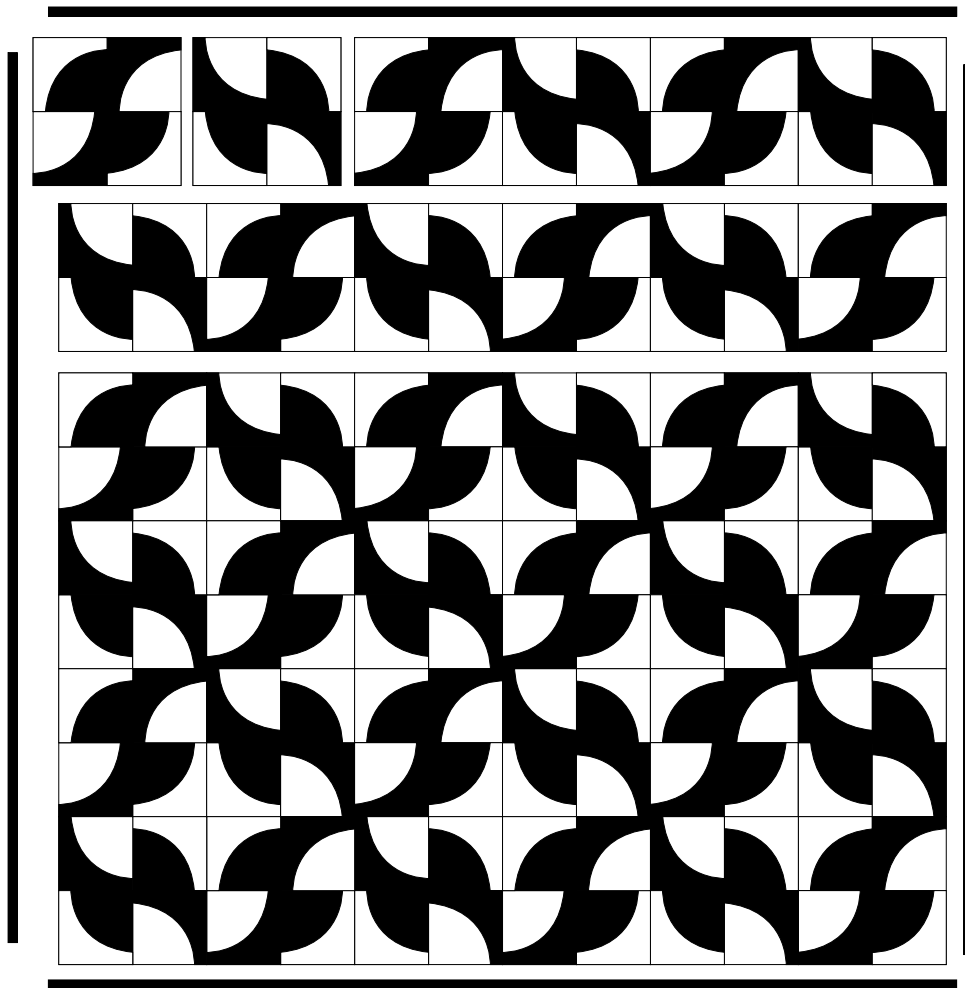
1. Divide backing into 2 (2¼-yard) lengths. Cut 1 piece in half lengthwise to make 2 narrow panels. Join 1 narrow panel to each side of wider panel; press seam allowances toward narrow panels.
2. Layer backing, batting, and quilt top; baste. Quilt as desired. Quilt shown was quilted with a vine design in the cream pieces and a floral design in the black pieces (Quilting Diagram).
3. Join 2¼"-wide black strips into 1 continuous piece for straight-grain French-fold binding. Add binding to quilt. Très chic, mon chéri.

DESIGNER PROFILE

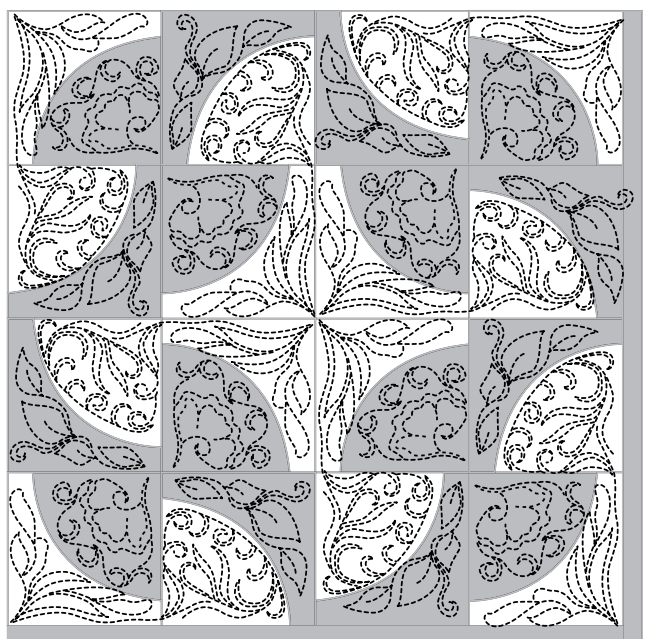
Quilty magazine is dedicated to bringing you gorgeous quilts you can actually make. We believe in quilts that make people smile.

For more information about Quilty, visit:

www.HeyQuilty.com



Quilt Top Assembly Diagram



Quilting Diagram



Learn how to sew curved seams at
www.HeyQuilty.com/sewcurves.

