



Modern Log Cabin BabyQuilt

36" x 48"



Fabric amounts based on fabric 40" wide.

Cover quilt uses fabrics from the **Thrive** fabric collection by *Natalia and Kathleen* for **Moda**.

| | Fabric | |
|----------|---------------|----------------------|
| Fabric A | Light Green | ¼ yard or Fat Eighth |
| Fabric B | Brown | ¼ yard |
| Fabric C | Teal | ¼ yard |
| Fabric D | White | ¼ yard |
| Fabric E | Light green | ⅜ yard |
| Fabric F | Teal | ⅜ yard |
| Fabric G | Brown | ½ yard |
| Fabric H | Dark Grey | ¾ yard |
| Fabric K | Backing | 2 ⅝ yards |

Cutting:

Fabric A- *light green, cut:*

1 square 4 ½" x 4 ½" and 1 rectangle 4 ½" x 8 ½".

Fabric B- *brown, cut:*

1 square 4 ½" x 4 ½" and 1 rectangle 4 ½" x 8 ½".

Fabric C- *teal, cut:*

1 rectangle 4 ½" x 12 ½" and 1 rectangle 6 ½" x 12 ½".

Fabric D- *white, cut:*

1 rectangle 4 ½" x 18 ½" and 1 rectangle 6 ½" x 16 ½".

Fabric E- *light green, cut:*

1 rectangle 4 ½" x 24 ½" and 1 rectangle 6 ½" x 20 ½".

Fabric F- *teal, cut:*

1 rectangle 4 ½" x 30 ½" and 1 rectangle 6 ½" x 24 ½".

Fabric G- *brown, cut:*

2 strips 6 ½" x WOF- sub-cut into 1 rectangle 6 ½" x 36 ½" and 1 rectangle 6 ½" x 30 ½".

Fabric H- dark grey, cut:

2 strips 6 ½" x WOF- sub-cut into 1 rectangle 6 ½" x 36 ½"; piece the rest of the strips together and cut into 1 rectangle 6 ½" x 42 ½".

5 strips 2 ¼" x 40"- piece together for double fold binding.

Backing, cut:

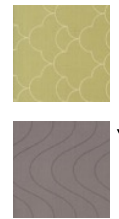
2 pieces 40" x 45"- piece together and trim into a backing about 45"wide x 57" long.

Quilt

Step 1

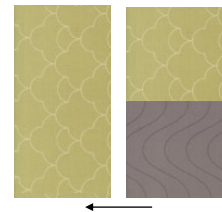
Basically this quilt is one huge block!

Sew a 4 ½" fabric A square to the top of the 4 ½" fabric B square.



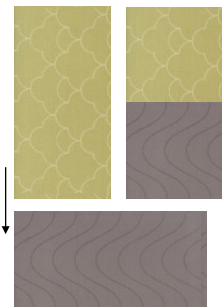
Step 2

Sew the 4 ½" x 8 ½" fabric A rectangle to the left side of the unit from step 1.



Step 3

Sew the 4 ½" x 8 ½" fabric B rectangle to the bottom of the unit from step 2.



Step 4

Sew the 4 ½" x 12 ½" fabric C rectangle to the left side of the unit from step 3.

Sew the 6 ½" x 12 ½" fabric C rectangle to the top of the unit.

Continue to add strips, first to the left side and then to the top of the quilt.

The quilt top should measure 36 ½" x 48 ½".

Finishing

Now that you have your quilt top, the next step is to prepare your backing, layer with your batting, baste and quilt as desired.

Once the quilt is quilted, trim the batting and backing even with the quilt top and bind the quilt with your 2 ¼" fabric H strips.